

Splice Connectors

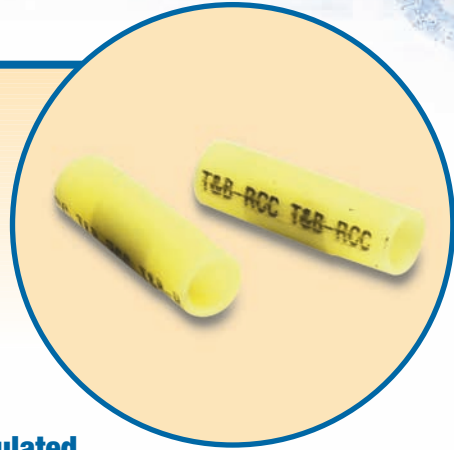
Splices

Butt Splices

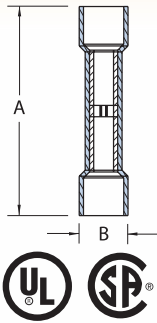
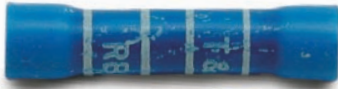
- Wires are butted together and crimped at each end of the splice
- Available either non-insulated or insulated with nylon or PVC
- Nylon insulated splices meet or exceed the requirements of MIL-T-7928
- Color-coded according to wire size

Parallel Splices

- Wires are laid side by side in the connector, and the connection is made in one crimp
- Offer advantages in simplicity of installation and small size
- One crimp completes the splice

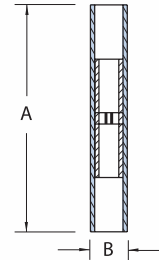


Vinyl-Insulated Splices — Butt Type — Expanded Insulation



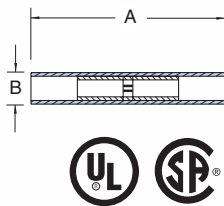
CAT. NO.	PKG. QTY.	WIRE RANGE	MAX. INS.	REC. TOOL	DIMENSIONS	
					A	B
2RA18X	100	22-18	.170	ERG2001	1.13	.25
RAA217-170	1,000	22-18	.170		1.13	.25
RAA217	1,000	22-18	.155		1.13	.23
2RB14X	100	16-14	.200		1.13	.26
RBB217-200	1,000	16-14	.200		1.13	.26
RBB217	1,000	16-14	.180		1.13	.23
2RC10X	50	12-10	.250		1.31	.31
RCC217-250	500	12-10	.250		1.31	.31
RCC217	1,000	12-10	.210		1.31	.29

Nylon-Insulated Aircraft Splices



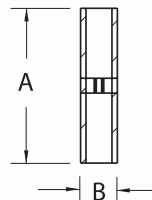
CAT. NO.	PKG. QTY.	WIRE RANGE	REC. TOOL	DIMENSIONS	
				A	B
2RZZ	50	26-22	WT1452	1.22	.15
2RAA	50	22-18	ERG2001	1.52	.25
RAA23	500	22-18		1.52	.25
2RBB	50	16-14		1.52	.28
RBB23	500	16-14		1.52	.28
2RCC	25	12-10		1.54	.35
RCC23	250	12-10		1.54	.35

Nylon-Insulated Butt Splices



CAT. NO.	PKG. QTY.	MAX INS. DIA.	WIRE RANGE	REC. TOOL	DIMENSIONS	
					A	B
2RA18	100	.115	22-18	ERG2001	1.19	.18
RAA21	1,000	.115	22-18		1.19	.18
2RB14	100	.148	16-14		1.19	.21
RBB21	1,000	.148	16-14		1.19	.21
2RC10	50	.210	12-10	TBM6S	1.26	.28
RCC21	500	.210	12-10		1.26	.28
2RD8	25	.340	8	TBM6S	1.69	.36
RDD27	200	.340	8		1.69	.36
2RE6	20	.420	6		1.85	.45
REE28	200	.420	6		1.85	.45
2RF4	15	.510	4		1.85	.52

Tefzel®-Insulated Butt Splice

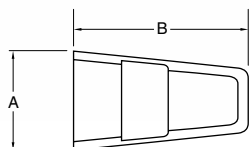


CAT. NO.	PKG. QTY.	WIRE RANGE	MAX. INS. DIA.	REC. TOOL	DIMENSIONS	
					A	B
RAAT21	1,000	22-18	1.22	WT145C	.115	—
RBBT21	1,000	16-14	1.22		.148	—
RCCT21	1,000	12-10	1.22		.210	—

Tefzel® is a registered trademark of DuPont.

Wire Joints

Crimp-On Wire Joints, One-Piece Nylon Self-Insulated



CAT. NO.	PKG. QTY.	WIRE RANGE		REC. TOOL	DIMENSIONS	
		MIN.	MAX.		A	B
RB44	100	2#18	2#16	WT2000	.31	.78
RB4-TB	1,000	2#18	2#16		.31	.78
RC55	50	4#18	2#12	WT2130A	.43	.95
RC6	500	4#18	2#12		.43	.95
RP12	100	3#14	4#12		.53	1.00
RP7	1,000	3#14	4#12		.53	1.00

CAT. NO.	ALLOWABLE WIRE COMBINATIONS						
	#22	#20	#18	#16	#14	#12	#10
RB4/RB44			2-3				
			1-2	2			
		3					
		3					
		3	1				
		2	3				
		1-2		2			
		2			1		
			3	1			
		1	2				

CAT. NO.	ALLOWABLE WIRE COMBINATIONS						
	#22	#20	#18	#16	#14	#12	#10
RC6/RC55			1-4			1	
				1-3		1	
					1-2	1	
						2	
				3-5		1	
					2-4	1	
						3	
				1-4		2	
					1-3	2	
					1-3	3	

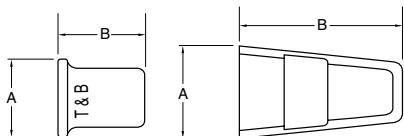
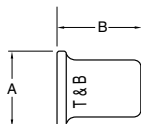
CAT. NO.	ALLOWABLE WIRE COMBINATIONS						
	#22	#20	#18	#16	#14	#12	#10
RP7/RP12							2
						1	1
					1		1
						2-4	
					2-4	1	
					1-3	2	
						1	3
						3-6	
						1	2-3
						2	1-2

PT Series Crimp-On Wire Joints

Two-Piece Nylon insulator



One-Piece Non-insulated



CAT. NO.	PKG. QTY.	WIRE RANGE		REC. TOOL	DIMENSIONS	
		MIN.	MAX.		A	B
PT66M	100	2#18	3#12 combination	WT161M	.50	.93
PT6M	100	—	Insulator only		.50	.93
PT60M	100	2#14	3#12 connector only		.31	.37
PT70	200	2#14	3#12		.29	.34
PT70M	200	3#18	4#12		.31	.37
PT80	50	2#16	4#10		.35	.62

Installation Procedure for "PT" Connectors



Twist wires, insert through serrated barrel of wire joint. (PT60M, PT70, PT70M, PT80).



Crimp and trim off excess wire with WT161M hand tool.



Screw PT6 insulator firmly onto PT160M barrel.

High Temperature Wire Joints

- Rated for temperatures up to 150° C (302° F), 600V maximum
- Molded, one-piece nylon construction for electrical insulation, 4UL94-V2
- Brazed copper sleeve prevents separation of connection during crimping
- Internal serrations enable cold flow for increased conductivity and pull-out strength



CAT. NO.	PKG. QTY.	WIRE RANGE		REC. TOOL	DIMENSIONS	
		MIN.	MAX.		A	B
High Temperature Wire Joints						
RB4-HT	1,000	2#18	2#16	WT2000, ERG2001	.36"	.82"
RC6-HT	500	3#16	3#14		.48"	.95"
RP7-HT	500	3#14	3#12	WT2130A, ERG2007	.53"	1.00"